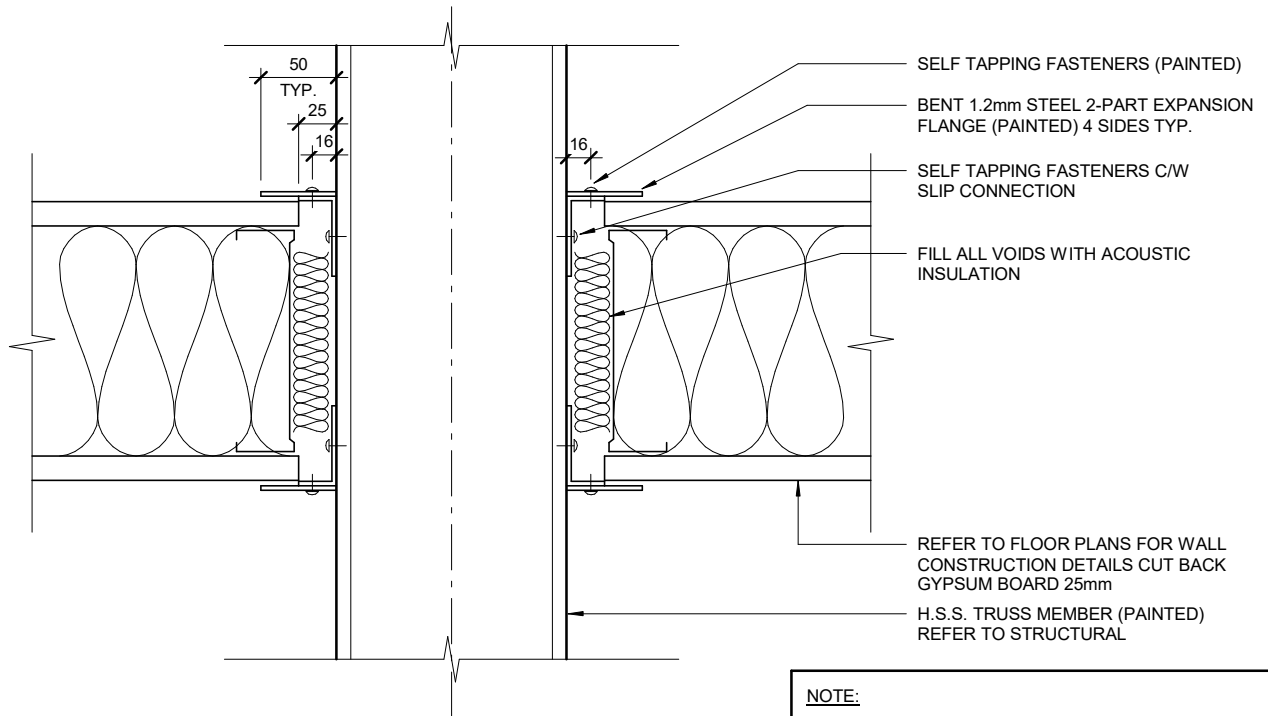


**ELEVATION**



**SECTION**

**NOTE:**

- ADJUST ANGLE OF EXPANSION FLANGE TO SUIT ANGLED TRUSS MEMBERS (TYP.)
- TYPICAL FOR ALL PENETRATIONS OF GYPSUM BOARD WALLS AND BULKHEADS
- PROVIDE SIMILAR 3-SIDED DETAIL FOR TOP TRUSS MEMBER

**TYPICAL TRUSS COLLAR DETAIL**

SCALE 1 : 5



LM Architectural Group

500-136 Market Ave  
Winnipeg Manitoba  
Canada R3B 0P4  
t: (204) 942.0681  
f: (204) 943.8676  
www.lm-architects.com

PROJECT:

**Bill and Helen Norrie Library**

Project Address: 15 Poseidon Bay, Winnipeg, MB.

Refer to drawing:

DRAWN BY: DN DATE: 08.08.19

Plotted on: 8/8/2019 4:11:22 PM C:\Users\H.WEST\Documents\1847\_BHN Library\_H.West.rvt

Addendum No. 01

**AP8.37**

COMM. NO.: 1847